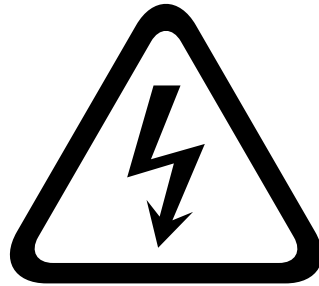




**PHOENIX LTC**  
MED CARTS



## CONVERTING STATSAFE FROM DELL TO LENOVO TABLET



**WARNING!**  
**RISK OF ELECTRICAL SHOCK**

**PLEASE CONTACT TECHNICAL SUPPORT IF  
YOU ARE EXPERIENCING ANY DIFFICULTY  
DURING THE TABLET CONVERSION**

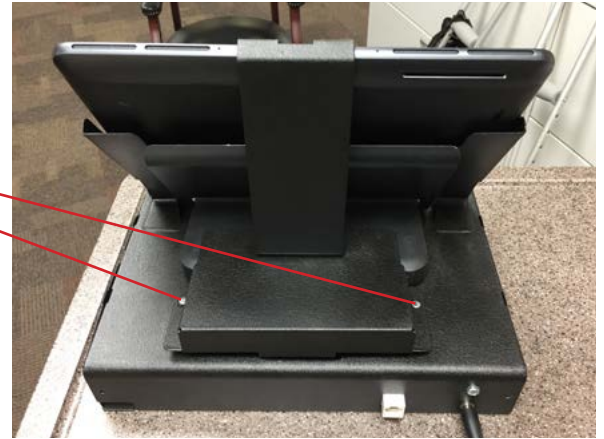
**855.633.2278 EXT. 2**

# PART 1: REMOVE YOUR CURRENT TABLET AND DOCKING STATION

1. Using the spanner screwdriver (*provided*), remove the 2 spanner screws.

Remove the front bezel and back weldment.

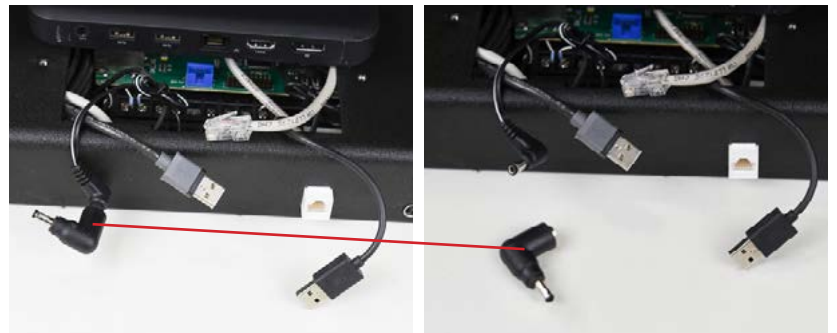
Remove the old tablet.



2. Disconnect the 3 cords that are connected to the Docking Station.



3. Remove the adapter from the power cord.



4. Once all cords are disconnected, remove the Docking Station from the top of the kiosk base.

Your kiosk base is now ready to have the Lenovo tablet installed.





# LENOVO PARTS AND DESCRIPTIONS

PLEASE NOTE: SOME OF THESE PARTS HAVE BEEN PRE-ASSEMBLED FOR YOUR CONVENIENCE

- 1** CABLE USB 3.0 3 HUB  
W/GBE ADAPTER  
32-C-USB-300



- 2** USB C MALE TO  
USB FEMALE  
32-C-USB-90



- 3** BACK PANEL  
WELDMENT  
WA-0359A



- 4** HARNESS, TERMINAL  
CABLE  
391230



- 5** SPANNER SCREW  
8-31X3/8  
41-SPN-8-25



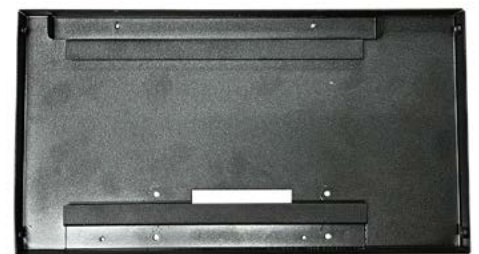
- 6** 8-32 KEPS NUT  
42-KEPS-8-10



- 7** LENOVO MIIX 320  
39-5140-PD



- 8** FRONT BEZEL  
T19761A8



- 9** BACK COVER WELDMENT  
T19824A

# PART 2: SETTING UP YOUR LENOVO TABLET

## CONNECT THE USB HUB

1. Locate the Cable USB 3.0 3 Hub w/GBE Adapter underneath the back cover.



2. Insert the 2 USB cords that were plugged into the docking station into the Cable USB 3.0 3 Hub w/GBE Adapter.



3. Insert the Ethernet Cable into the hub.



## CONVERTING THE POWER

1. Locate the Harness, Terminal Female Cable and the Harness, Terminal Male Cable.

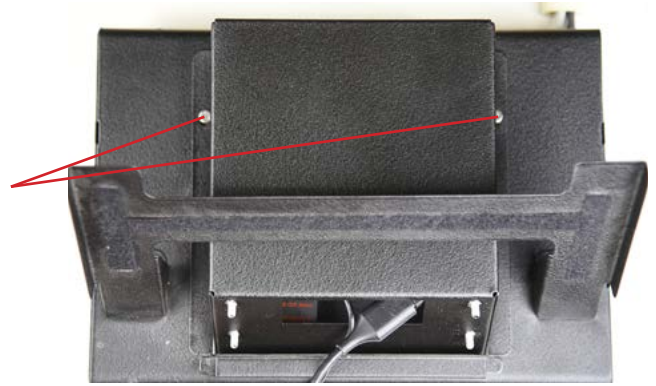
Connect the two.



# INSTALLING THE LENOVO TABLET

1. Take the back cover and place it onto the kiosk base, making sure all of the exposed wires are fully covered.

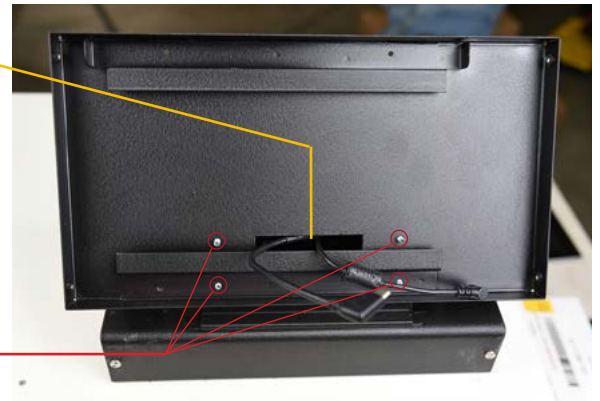
Locate the 2 pre-drilled holes on the back cover and line them up with the pre-drilled holes on the kiosk base. Secure into place with spanner screws using the spanner screwdriver.



2. Pull the Harness Terminal Male Cable and the USB C Male to Female Cable through the opening in the back tablet weldment.

Mount the Back Tablet Weldment into place by lining up the 4 pre-drilled holes to the spanner screws on the back cover.

Secure with KEPS Nuts.



3. Take the two cables and pull them to the right hand side.

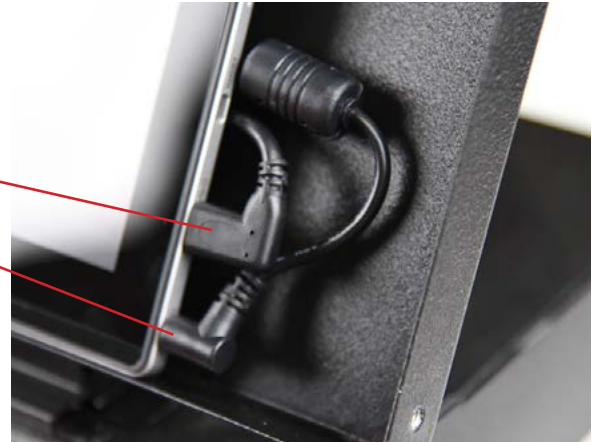


4. Place the Lenovo tablet into the slots that are welded inside the Back Tablet Weldment (*the Lenovo power button should be on the top left*)





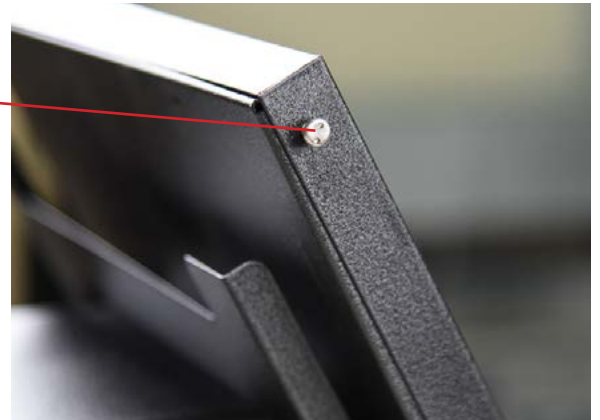
5. Plug the two cables into their ports on the Lenovo tablet.



6. Take the Front Bezel and place onto the Back Tablet Weldment to enclose the tablet.



7. Secure the Front Bezel into place with spanner screws.



Please call Tech Support immediately to have your Cart ID assigned to the new tablet.

**855.633.2278**

*Once you have the Cart ID re-assigned your conversion is complete and your tablet is ready for use!*



**PHOENIX LTC**  
MED CARTS

[WWW.PHOENIXLTC.COM](http://WWW.PHOENIXLTC.COM)