

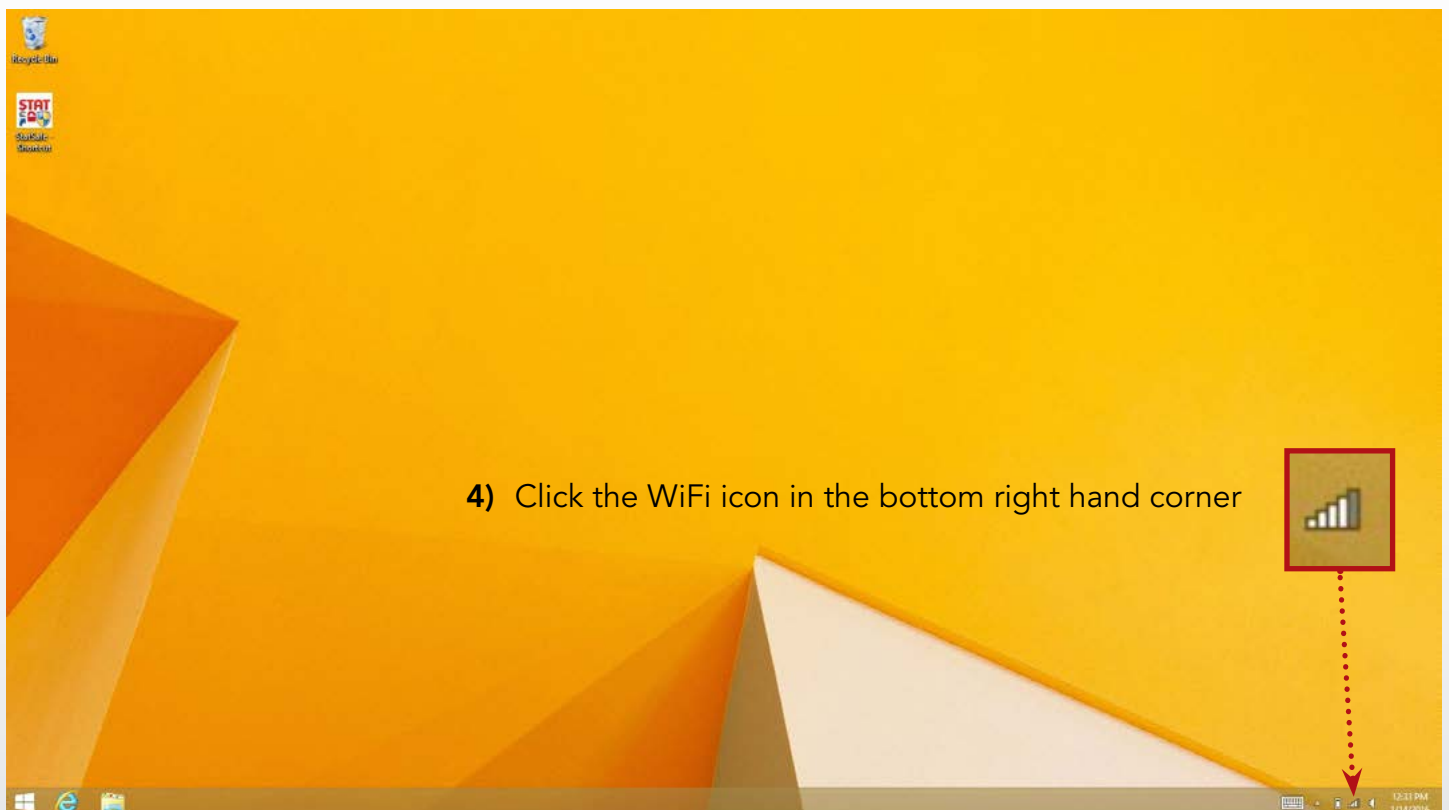
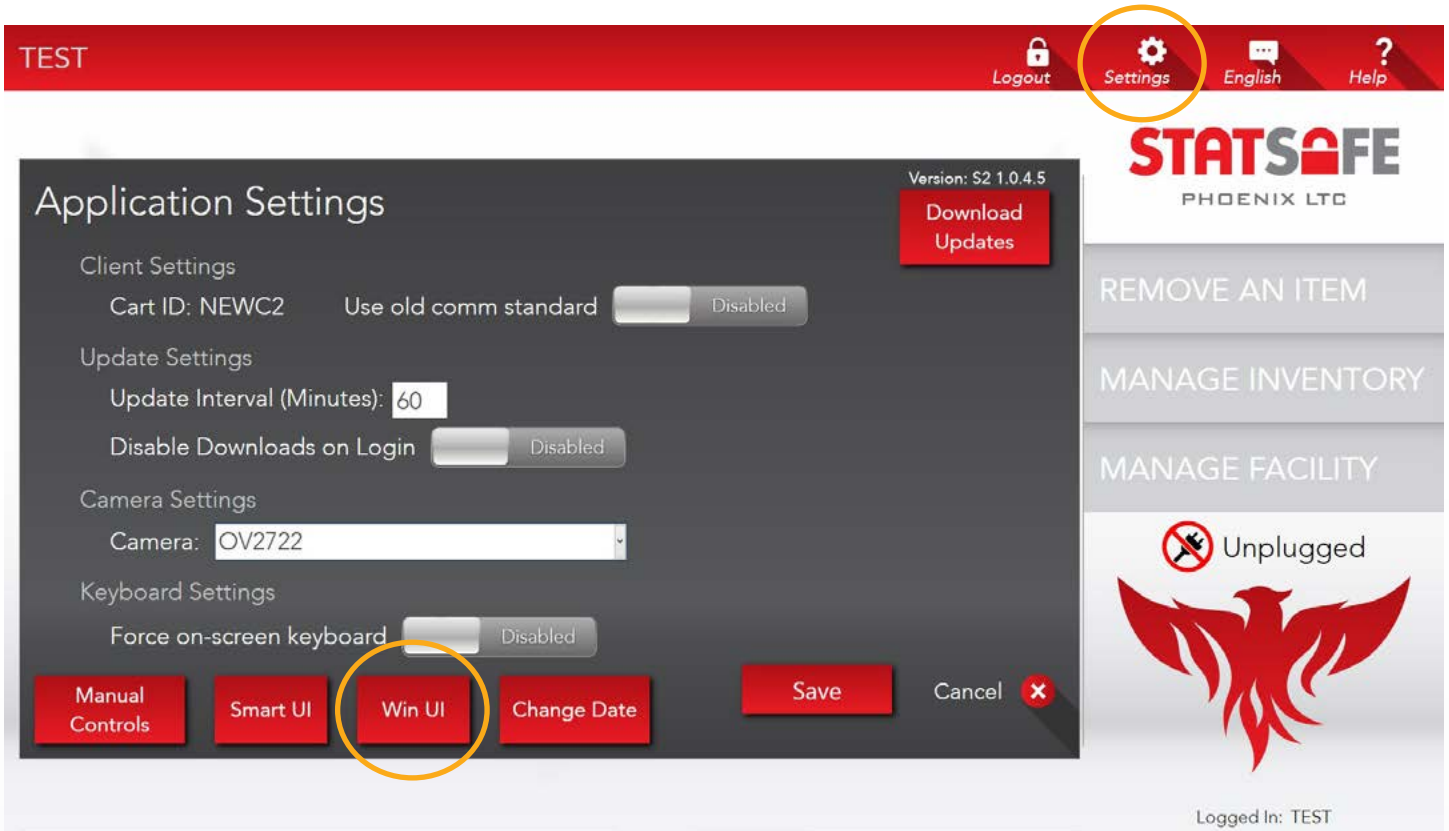
**STATSAFE**

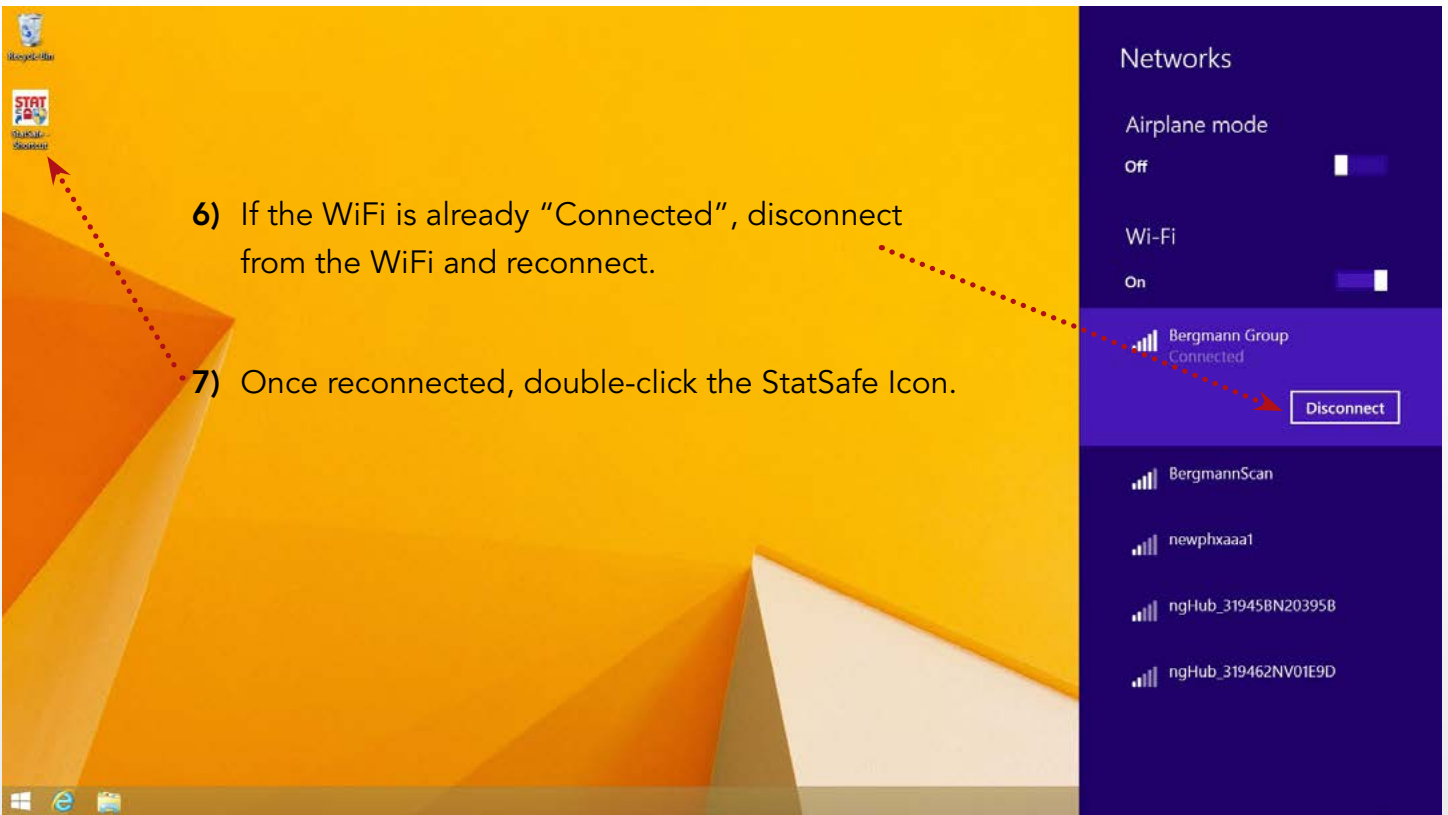
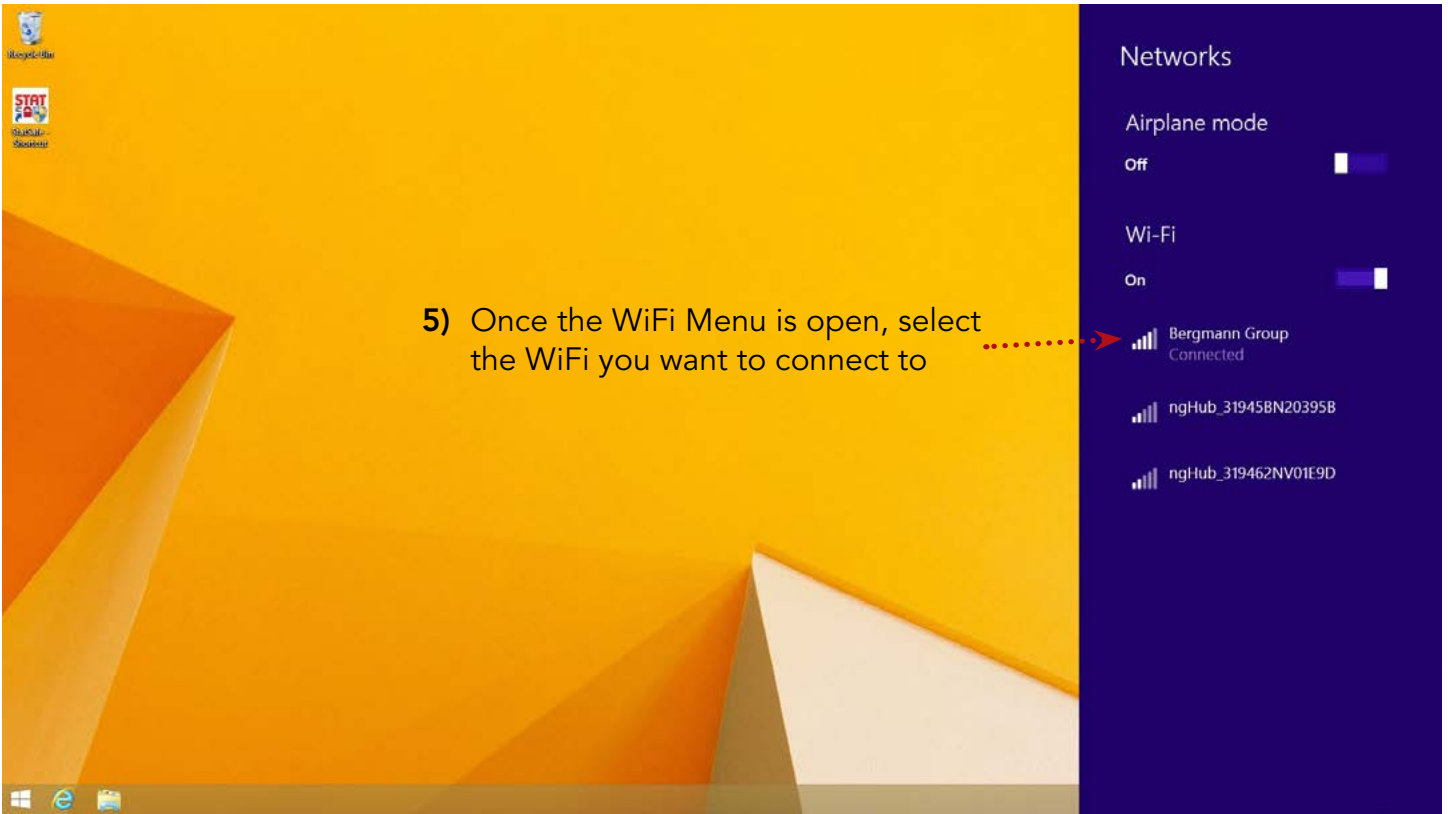
**ESTABLISHING A  
WIFI CONNECTION  
ON A DELL**



**PHOENIX LTC**  
MED CARTS

- 1) Have a Supervisor User login and select the "Settings" icon
- 2) Then select "Win UI"
- 3) The tablet will then reboot and start in the windows desktop





Welcome to  
**STATSAFE**  
BY PHOENIX LTC

Login

8) Select Options

Options 

- 9) Select "Download Updates"
- 10) Once it is done downloading, check the Portal to make sure it shows a communication.

Welcome to  
**STATSAFE**  
BY PHOENIX LTC

Login

- Download Updates
- Configure Wi-Fi
- Change Language
- Change Cart ID
- Restart StatSafe
- Update Program
- Connect to Technician

Options 

11) Once connected have the Supervisor User login again

12) Select "Settings" then select "Smart UI", this will put the StatSafe back into kiosk mode

TEST

Logout Settings English Help

STATSAFE  
PHOENIX LTC

Version: S2 1.0.4.5  
Download Updates

Application Settings

Client Settings  
Cart ID: NEWC2 Use old comm standard Disabled

Update Settings  
Update Interval (Minutes): 60  
Disable Downloads on Login Disabled

Camera Settings  
Camera: OV2722

Keyboard Settings  
Force on-screen keyboard Disabled

Manual Controls Smart UI Win UI Change Date Save Cancel

REMOVE AN ITEM  
MANAGE INVENTORY  
MANAGE FACILITY

Unplugged

Logged In: TEST