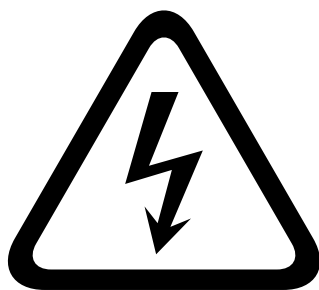




PHOENIX LTC
MED CARTS



CONVERTING STATSAFE FROM IPAD TO PIONEER TABLET



WARNING!
RISK OF ELECTRICAL SHOCK

**PLEASE CONTACT TECHNICAL SUPPORT IF
YOU ARE EXPERIENCING ANY DIFFICULTY
DURING THE TABLET CONVERSION**

855.633.2278 EXT. 2

TOOLS INCLUDED



#6 Spanner Bit
99-3972



#8 Spanner Bit
99-3972-1



Power Bit Set
99-3467



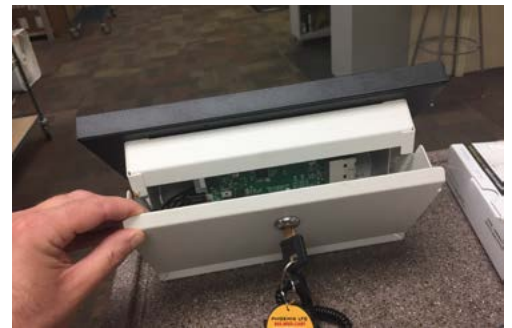
Multibit Screwdriver Set
99-5729-4

PART 1: REMOVE YOUR CURRENT TABLET AND DOCKING STATION

This is what your StatSafe Kiosk should look like before the conversion.



1. Remove the back cover from the kiosk.



2. Locate the 4 nylock nuts inside the kiosk and remove them.

NOTE: Please save the nylock nuts as you will need them to install your new Lenovo tablet



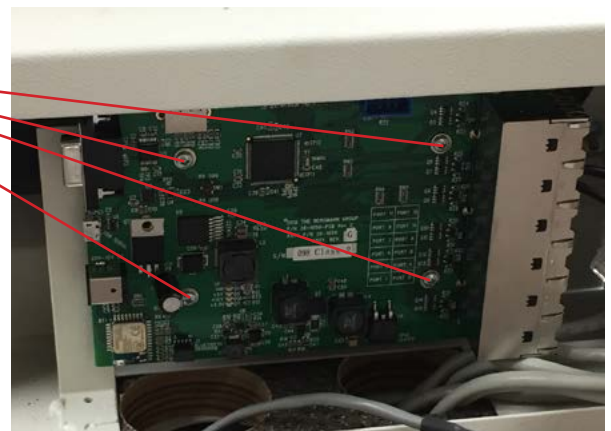
3. Document the placement of the Power, USB and RJ45 cables on the circuit board. You will need this as reference when installing the new tablet.



4. Unplug the Power, USB and RJ45 cables from the circuit board.



5. Unscrew the 4 screws for the circuit board. Remove both the circuit board and the iPad holder.



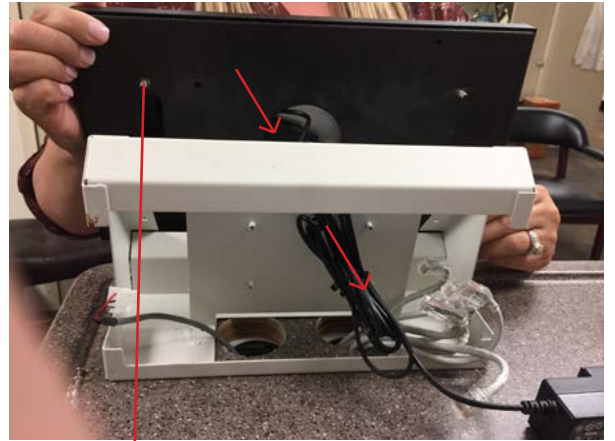
NOTE: Please save the 4 screws as you will need them to install your new Lenovo tablet

Your kiosk base is now ready to have the Pioneer tablet installed.

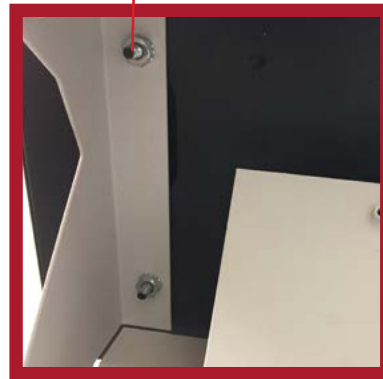


PART 2: INSTALLING YOUR PIONEER TABLET

1. Feed the USB cable and power supply on the new tablet through the front of the existing kiosk base and out the back of the kiosk base.
2. Attach new tablet assembly to the kiosk base by inserting the 4 threaded posts through the holes on the kiosk base.



Secure tablet assembly by attaching the nylock nuts that were removed earlier.

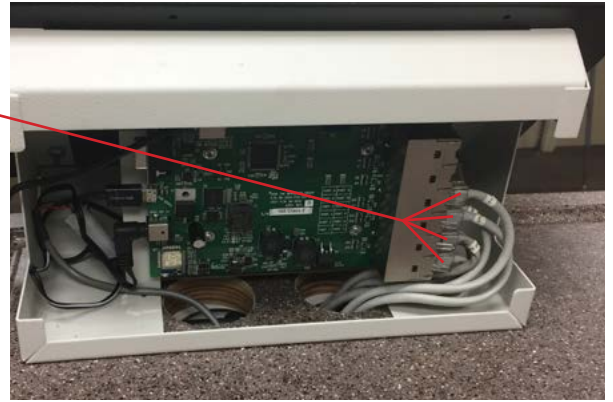


3. Attach the new circuit board (included with tablet) to the kiosk base in the same orientation that the old circuit board was in.

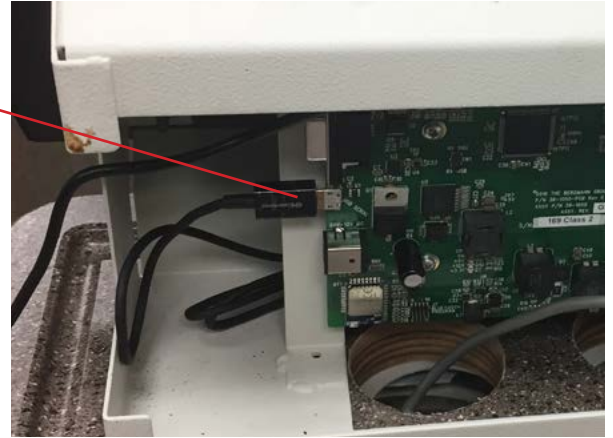
Secure circuit board by attaching the 4 screws that were removed earlier.



4. Plug the RJ-45 cables into the circuit board.



5. Plug the micro USB cable from the new tablet into the circuit board micro usb connector.



6. Take the molex power connector and attach it to the barrel jack/molex adapter (included with tablet).



7. Then plug the barrel jack connector into the circuit board.



8. Place the back cover back on the kiosk plate, making sure to feed the power cable out the back.



9. Plug the power supply for the tablet into the wall in addition to the original power supply.

Please call Tech Support immediately to have your Cart ID assigned to the new tablet.

855.633.2278



Once you have the Cart ID re-assigned your conversion is complete and your tablet is ready for use!



PHOENIX LTC
MED CARTS

WWW.PHOENIXLTC.COM