



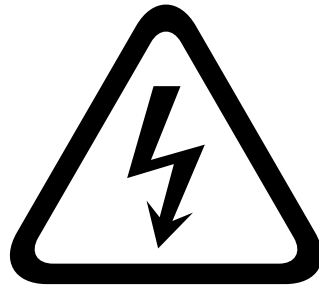
PHOENIX LTC
MED CARTS



STATSAFE
Automated Medication Management

CONVERTING STATSAFE FROM IPAD TO PIONEER TABLET

WWW.PHOENIXLTC.COM



WARNING!
RISK OF ELECTRICAL SHOCK

**PLEASE CONTACT TECHNICAL SUPPORT IF
YOU ARE EXPERIENCING ANY DIFFICULTY
DURING THE TABLET CONVERSION**

855.633.2278 EXT. 2

*FOR COLOR INSTRUCTIONS
SCAN THE QR CODE BELOW*



PARTS AND DESCRIPTIONS

PLEASE NOTE: SOME OF THESE PARTS HAVE BEEN PRE-ASSEMBLED FOR YOUR CONVENIENCE



1 USB 4"
32-C-USB-35



2 CABLE USB 3.0
3 HUB W/GBE
ADAPTER
32-C-USB-300



3 CABLE USB MALE
A-MICRO B MALE
6.5FT
32-C-USB-25



4 PIONEER
CHARGER
39-5200-1C



5 CIRCUIT
BOARD ASSY
38-1050



6 STATSSAFE MOLEX
TO BARREL
ADAPTER
391144



7 HEX NUT,
NYLOCK, #8-32
42-NYL-8-10



8 8-32 KEPS NUT
42-KEPS-8-10



9 SPANNER SCREW
6-32 x 1/4
41-SPN-6-25



10 PIONEER DASH/T3
2GB 10.1" TAB
39-5200-1-PD



11 BEZEL, TABLET SHELL
I-1114A1



12 BACK PLATE, KIOSK,
IPAD TO PIONEER
A17192A3

13 UPPER RAIL,
BACK PLATE
I-1112A1

14 LOWER RAIL,
BACK PLATE
I-1113

Your new tablet needs to be charged before installing. Please remove the power supply and tablet from the box and allow to charge for 15-30 minutes prior to installing.

TOOLS INCLUDED



#6 Spanner Bit
99-3972



#8 Spanner Bit
99-3972-1



Nut Driver 1/4 Shank
Power Bit Set
99-3467



Screwdriver 6 in 1
99-5729-4

PART 1: CHARGE THE PIONEER TABLET BEFORE INSTALLING

1. Remove the 4 spanner screws on the sides of the tablet assembly using the #6 Spanner Bit.



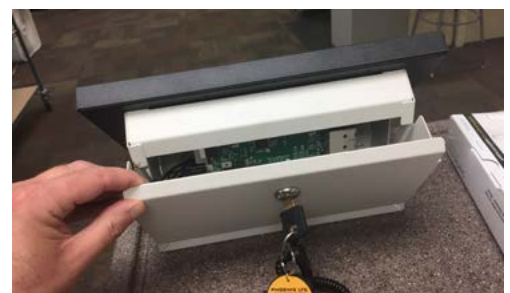
2. Remove the tablet from the assembly and charge.



PART 2: REMOVE YOUR CURRENT TABLET AND DOCKING STATION

This is what your StatSafe Kiosk should look like before the conversion.

1. Remove the back cover from the kiosk.



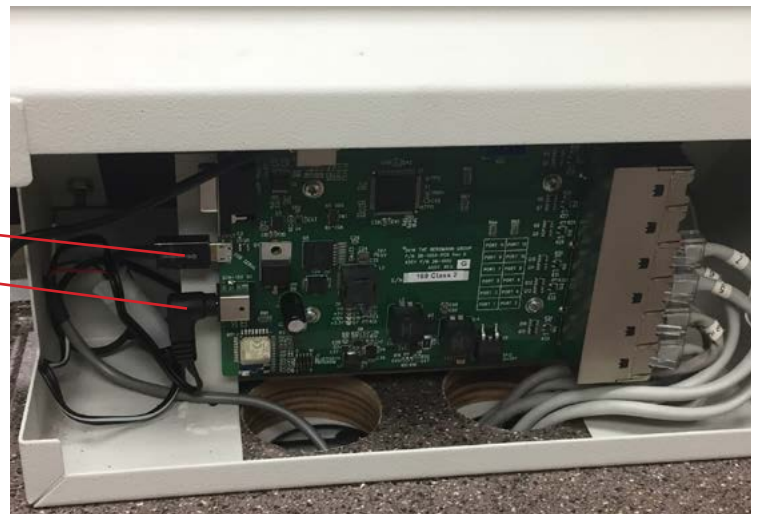
2. Locate the 4 nylock nuts inside the kiosk and remove them.

IMPORTANT:
Save the nylock nuts as you will need them to install your new Pioneer tablet



3. Unplug the following cables from the circuit board:

USB Cable
Power Cable



4. Disconnect the USB Cable and Power Cable from the StatSafe. You no longer need these two parts

5. Unplug the existing RJ45 cables, and ONE BY ONE plug them into the new circuit board in the exact same position.

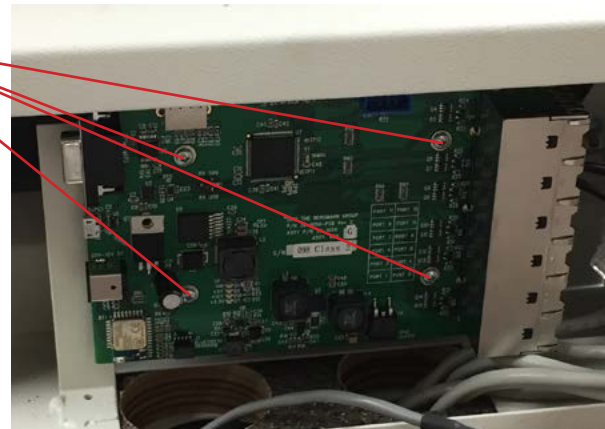
IMPORTANT: EACH OF THESE CABLES MUST BE PLUGGED INTO THE NEW CIRCUIT BOARD IN THE EXACT SAME POSITION



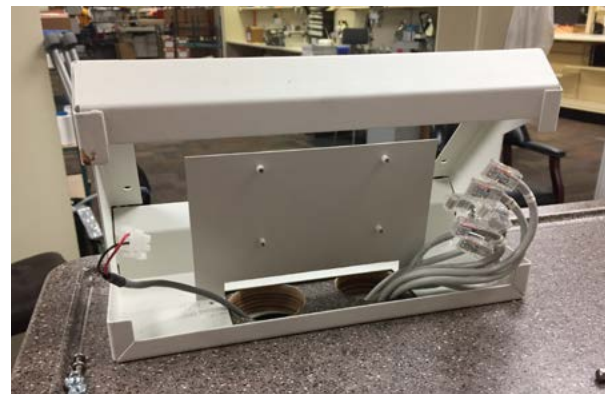
6. Put the new circuit board aside for now.

7. Unscrew the 4 screws for the circuit board. Remove the circuit board and the iPad holder.

IMPORTANT: Keep the 4 screws, you will use them to install the new circuit board.



Your kiosk base is now ready to have the Pioneer tablet installed.



PART 3: INSTALLING THE PIONEER TABLET

1. Assemble the following parts:



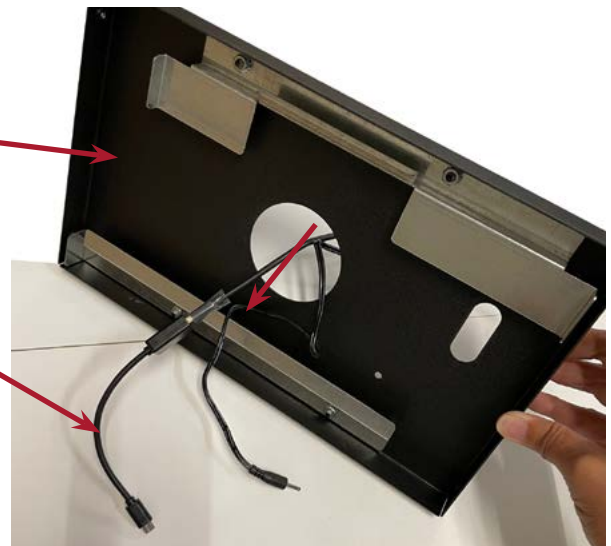
2. Feed the USB assembly (Part 1 head first) and Pioneer charger (Part 4) through the back of the existing kiosk base and through the back plate of the tablet assembly.



Make sure the orientation of the back plate looks like this

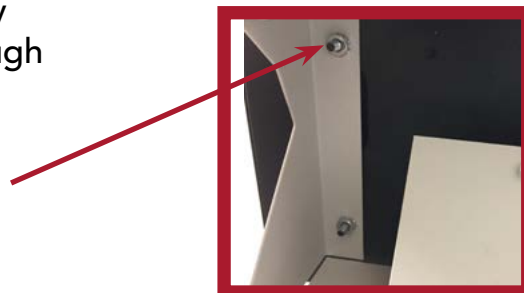


PART 1
32-C-USB-35
(shown above)

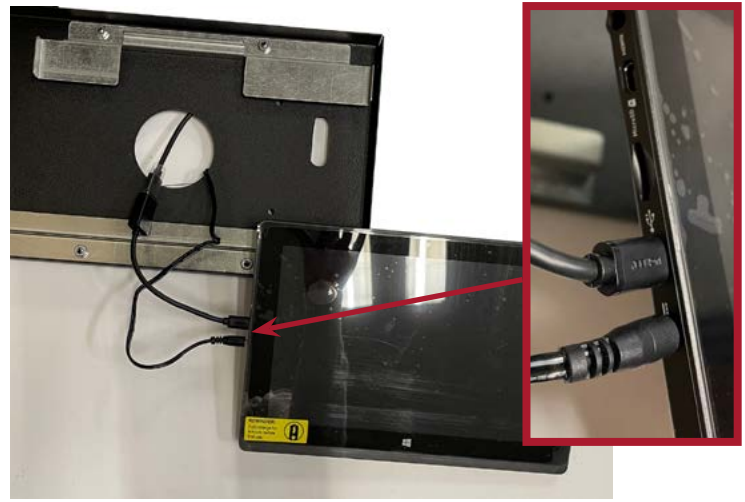


3. Attach the Back Plate (Part 11) of the tablet assembly to the kiosk base by inserting the 4 threaded posts through the holes on the kiosk base.

Secure by attaching the nylock nuts that were removed earlier.



4. Plug the Cable Male Micro to Fem USB 4" (Part 1) and Pioneer charger into the tablet.



5. Place the tablet into the back plate tucking the two cords behind it.



6. Place the tablet shell onto the back plate.

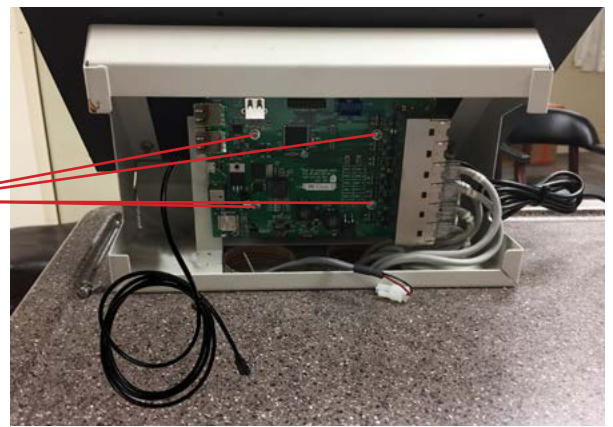


7. Secure with 4 spanner screws.

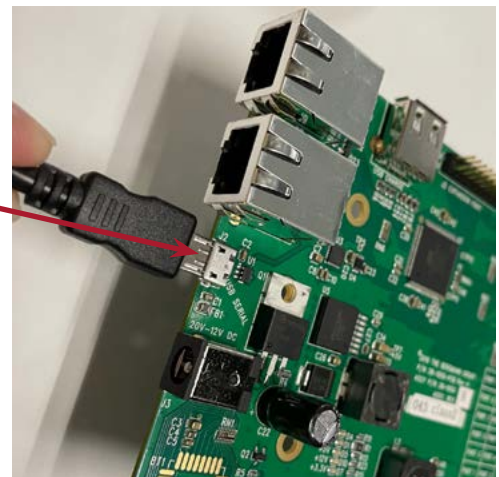


8. Attach the new circuit board to the kiosk base in the same orientation that the old circuit board was in.

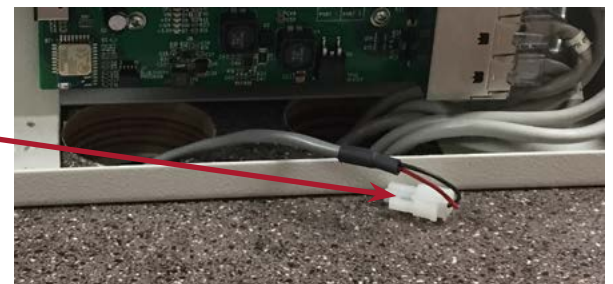
Secure the new circuit board by attaching the 4 screws that were removed earlier.



9. Plug the Cable USB Male A-Micro B Male 6.5ft (Part 3) into the circuit board.



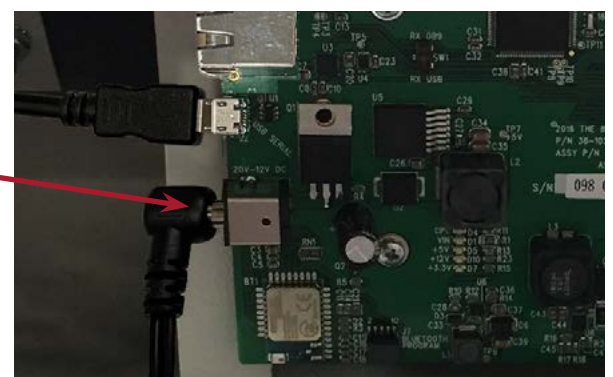
10. Locate the molex power connector in your StatSafe.



11. Attach it to the barrel jack/molex adapter (Part 6).



12. Then plug the barrel jack connector into the circuit board.



13. Place the back cover on the kiosk plate, carefully placing the Pioneer charger cord between them.

Gently close and lock the cover.



Plug the Pioneer charger into the wall in addition to the original power supply.

Need picture of original power supply and show it plugged in as well.

Please call Tech Support immediately to have your Cart ID assigned to the new tablet.

855.633.2278



Once you have the Cart ID re-assigned your conversion is complete and your tablet is ready for use!



PHOENIX LTC
MED CARTS

WWW.PHOENIXLTC.COM